



FYBROC

FULL LINE BULLETIN

For over 50 years, Fybroc has been a global leader in fiberglass reinforced polymer (FRP) pump technology, delivering powerful, non-metallic solutions for the most demanding fluid-handling applications. Available in a wide range of sizes and materials, Fybroc pumps are built to handle the harshest liquids, including acids, caustics, seawater, and waste liquids.

Fybroc's proprietary resin transfer molding (RTM) process ensures superior strength and corrosion resistance by strategically reinforcing high-stress areas with long-strand fiberglass. Unlike conventional compression molding, which uses chopped glass with random reinforcement and delivers lower strength performance, RTM enables thinner-walled, high-performance components with nearly pure resin systems—offering chemical protection, exceptional durability, and extended service life.



MARKETS

- Aquariums
- Battery
- Chemical Process
- Commercial Marine/Navy
- Desalination/Water Reuse
- Electric Utilities
- Electronics
- Pulp & Paper
- Reverse Osmosis
- Scrubbers

APPLICATIONS

- Abrasive Fines
- Acids
- Bleaches
- Brines
- Caustics
- Seawater
- Solvents
- Wastewater

MATERIALS OF CONSTRUCTION

VR-1 (VINYL ESTER RESIN)

Handles vast majority of corrosive applications including most acids, caustics, brines, sea water, and wastewater.

VR-1 BPO-DMA (VINYL ESTER RESIN WITH BPO-DMA CURE SYSTEM)

Used to accommodate applications for specific corrosion resistance to bleaches such as sodium hypochlorite (NaOCl) and hydrogen peroxide (H_2O_2).

VR-1A (VINYL ESTER RESIN WITH ABRASIVE RESISTANT MATERIAL)

Used for pumping liquids with low concentration highly abrasive fines such as fly ash, diatomaceous earth, or titanium dioxide.

VR-1V (VINYL ESTER RESIN WITH SYNTHETIC VEIL)

Protection used specifically for fluoridic applications such as hydrofluoric acid (HF) and fluosilicic acid (H_2SiF_6).

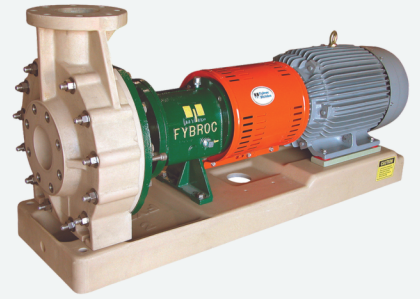
EY-2 (EPOXY RESIN)

Offers outstanding chemical resistance for aggressive chemical/compounds, acids, ideal for high concentrations of sulfuric acid (up to 98%) and solvents.

HORIZONTAL ANSI PUMPS

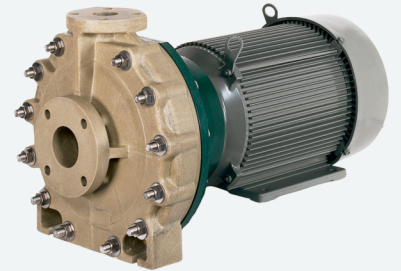
SERIES 1500 HORIZONTAL PUMPS

ANSI/ASME standard pumps featuring high strength casings with integral flanges. 19 sizes with capacities to 5000 GPM (1136 m³/hr) and heads to 400 feet (122 m).



SERIES 1530 CLOSE COUPLED PUMPS

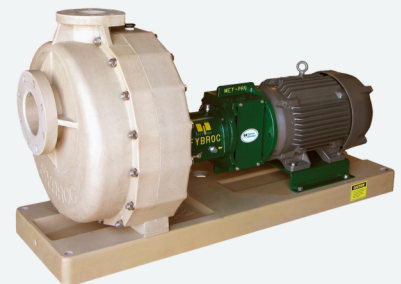
The space and weight savings of a close coupled pump are combined with the ruggedness of a standard Series 1500 Pump. 16 sizes with capacities to 1500 GPM (341 m³/hr) and heads to 400 feet (122 m).



SELF-PRIMING PUMPS

SERIES 1600 SELF-PRIMING PUMPS

These self-primers combine efficiency with excellent priming times. Substantial parts interchangeability with Series 1500 Pumps. Six sizes with capacities to 1400 GPM (318 m³/hr) and heads to 300 feet (91 m).



SERIES 1630 CLOSE COUPLED SELF-PRIMING PUMPS

The benefits of the close-coupled pump are integrated with the features of the Series 1600 Pump. Six sizes with capacities to 1400 GPM (318 m³/hr) and heads to 300 feet (91 m).



MAG-DRIVE PUMPS

SERIES 2530 CLOSE COUPLED SEALLESS PUMPS

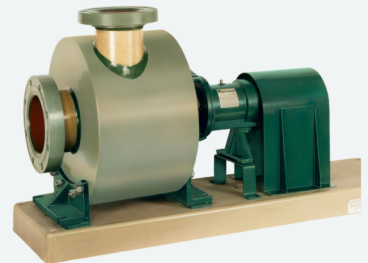
Available in VR-1, VR-1 BPO-DMA & EY-2 materials with silicon carbide shaft, sleeve bearing and thrust bearings. ANSI/ASME B73.1 dimensions with 3/16" FRP containment can. Ten sizes with capacities to 1500 GPM (341 m³/hr) and heads to 400 feet (122 m). Self-priming configurations are also available.



RECESSED IMPELLER PUMPS

SERIES 3000 RECESSED IMPELLER HORIZONTAL PUMP

Recessed impeller located outside of flow path ensures durability, structural integrity, and dependable service. Internal clearances permit pumping of corrosive solids with minimal impeller contact. VR-1A available for increased abrasion resistance. Five sizes with capacities to 1200 GPM (273 m³/hr) and heads to 125 feet (38 m).



SERIES 6000 RECESSED IMPELLER VERTICAL PUMP

Recessed impeller positioned outside the main flow path creates a vortex motion, allowing solids to pass through freely with minimal contact—reducing the risk of clogging. Five sizes with capacities to 1200 GPM (273 m³/hr) and heads to 125 feet (38 m).



VERTICAL PUMPS

SERIES 5500 VERTICAL SUMP PUMPS

Sump pumps are furnished in lengths (settings) from 18 inches to 30 feet with optional tailpipes. 19 sizes with capacities to 5000 GPM (1136 m³/hr) and heads to 400 feet (122 m).



SERIES 5530 DRY PIT PUMPS

Corrosion-resistant, structurally superior, and highly dependable dry pit pump, engineered for the most demanding applications. 16 sizes with capacities to 1500 GPM (341 m³/hr) and heads to 400 feet (122 m).



SERIES 7500 CANTILEVER SUMP PUMPS

Cantilever pumps are furnished in lengths (settings) from 18 inches to four feet with optional tailpipes. 18 sizes with capacities to 4500 GPM (1022 m³/hr) and heads to 200 feet (61 m).



SERIES 8500 VERTICAL TURBINE PUMPS

Single and/or multi-stage vertical pump with mixed flow impeller and casing designs furnished in variable pump lengths. Four sizes with capacities to 2250 GPM (511 m³/hr) and TDH to 85 feet (26 m) per stage.



AUTHORIZED SERVICE CENTERS

Tusk Industrial's Authorized Service Center (ASC) program offers unparalleled value for Dean and Fybroc customers. By partnering with an ASC, customers gain access to OEM-certified parts and specialized maintenance services that ensure peak performance and reliability. Each ASC is staffed with factory-trained technicians who provide troubleshooting, startup assistance, and repair services—helping reduce downtime, extend equipment lifespan, and enhance operational efficiency.

ADVANTAGES OF PARTNERING WITH AN ASC

UNMATCHED EXPERTISE AND CERTIFICATION

Certified and factory-trained, ASC technicians deliver expert service and repairs for all Dean and Fybroc pumps—ensuring peak performance, reliability, and peace of mind.

RELIABLE SERVICE, GUARANTEED

The ASC program includes a comprehensive 1-year warranty covering both parts and labor. All service work is performed by certified ASC technicians, with Tusk Industrial supplying genuine OEM parts—guaranteeing exceptional service quality, equipment reliability, and long-term performance.

24/7 SPECIALIZED SUPPORT

ASCs provide 24/7 expert support to minimize downtime and keep your operations running smoothly—ultimately saving you time and money.

**TO FIND AN AUTHORIZED SERVICE
CENTER NEAR YOU SCAN HERE!**

